

## Evaluation of Polydimethylsiloxane-Phenylsiloxane as a Coating for Stir Bar Sorptive Extraction

---

Yamile Pérez-Padilla<sup>1</sup>, Saúl Ariel Medina Cetina<sup>1</sup>, Alejandro Ávila-Ortega<sup>1</sup>, Jesús Alberto Barrón-Zambrano<sup>1</sup>, Alfredo Rafael Vilchis-Néstor<sup>2</sup>, Cristian Carrera-Figueiras<sup>1</sup>, David Muñoz-Rodríguez<sup>1\*</sup>

<sup>1</sup>Cuerpo Académico de Química Fundamental y Aplicada, Facultad de Ingeniería Química, Universidad Autónoma de Yucatán, Periférico Norte km 33.5, Tablaje Catastral 13615, Col. Chuburná de Hidalgo Inn, C.P. 97203 Mérida, YUC, México.

<sup>2</sup>Centro Conjunto de Investigación en Química Sustentable UAEM-UNAM, Carretera Toluca-Atlacomulco km 14.5, Campus “El Rosedal”, C.P. 50200 San Cayetano-Toluca, MEX, México.

**Corresponding author:** Dr. David Muñoz-Rodríguez, [david.mr@correo.uady.mx](mailto:david.mr@correo.uady.mx)

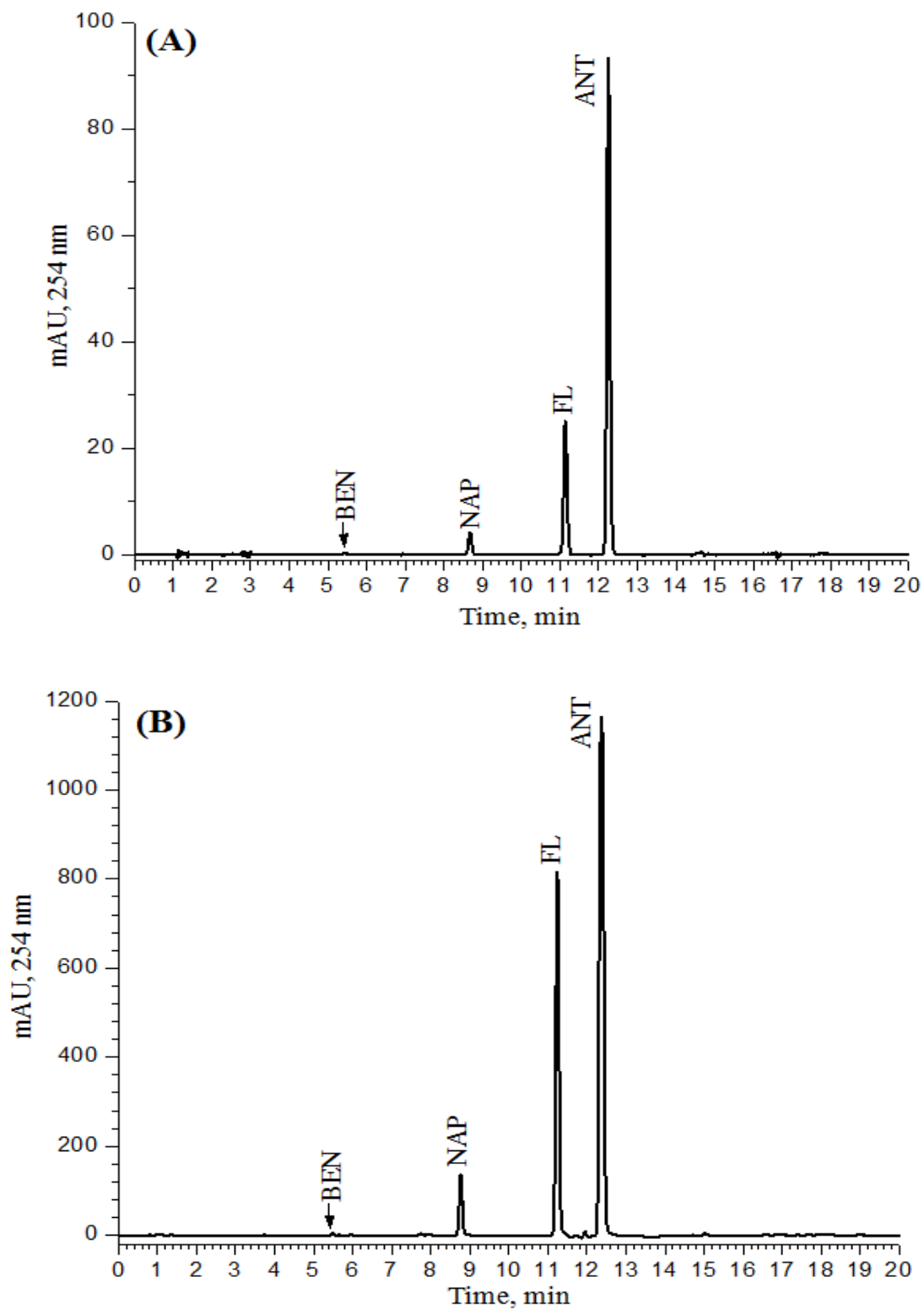
Phone +52 (999) 9-46-09-56, 9-46-09-89.

Received December 8<sup>th</sup>, 2017; Accepted February 20<sup>th</sup>, 2018.

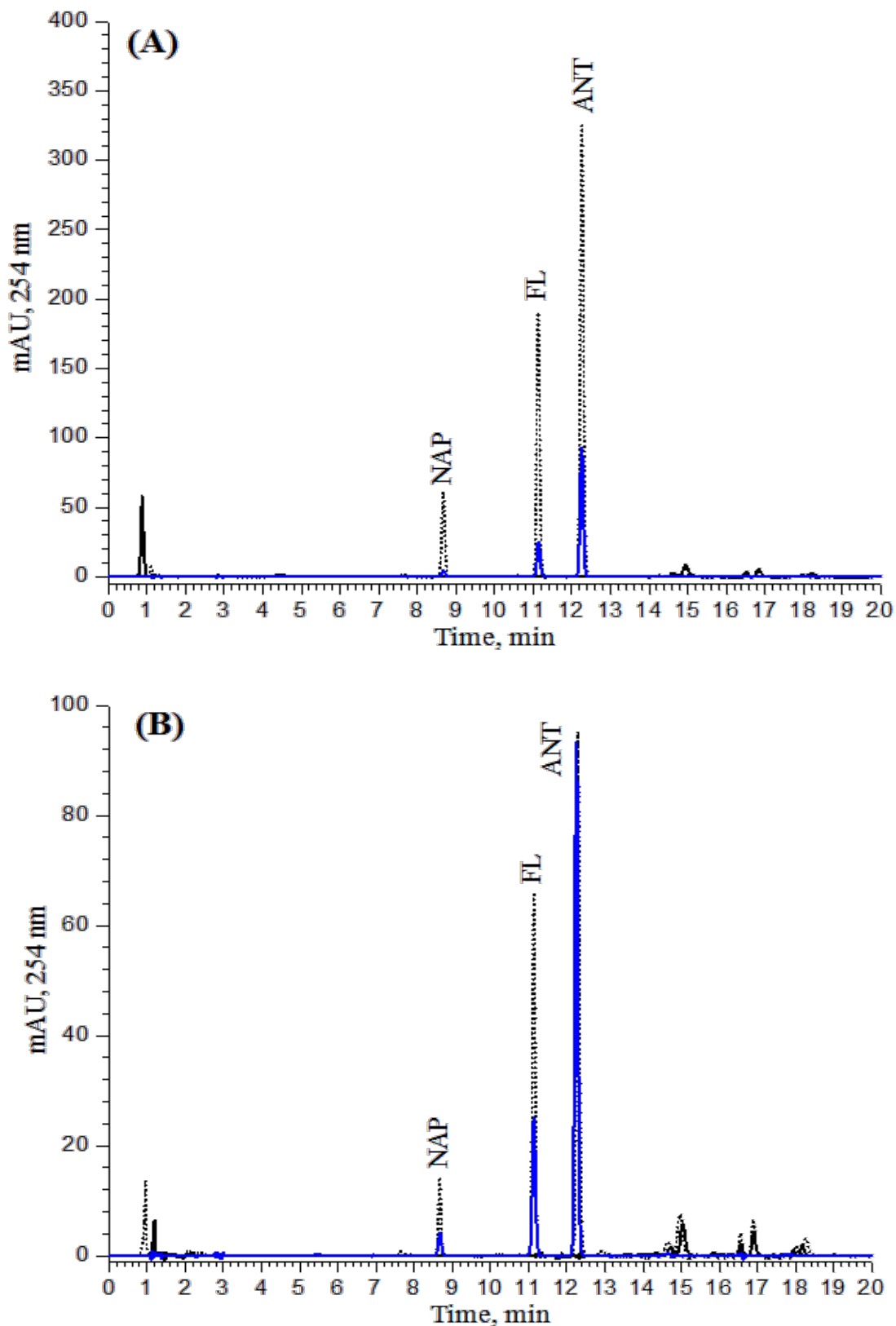
DOI for the main article: <http://dx.doi.org/10.29356/jmcs.v62i2.431>

## Electronic Supplementary Material

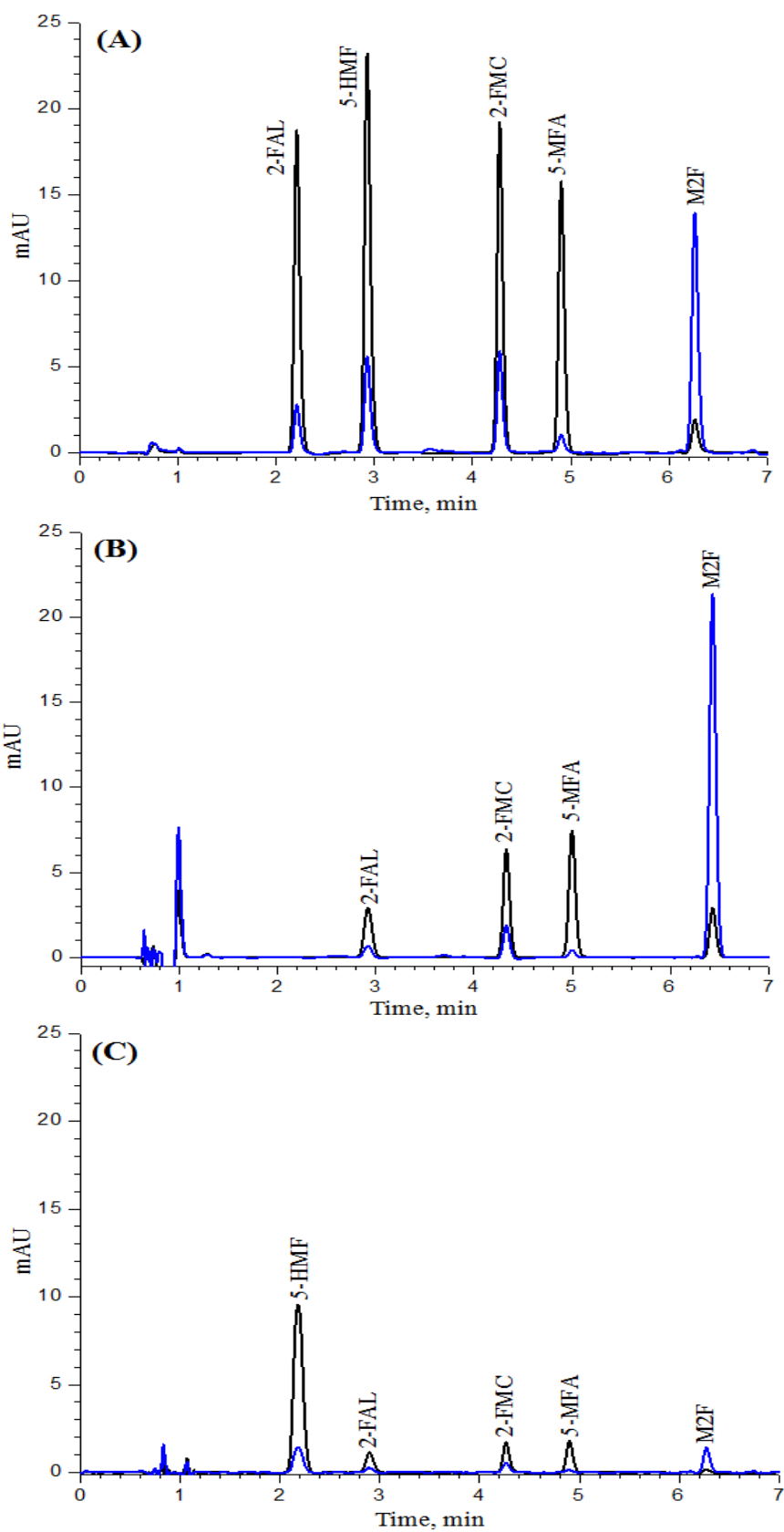
**Fig. 1S.** Typical chromatograms of benzene derivatives. (A) Standard solution (1 mg/L) and (B) SBSE extract.



**Fig. 2S.** Typical chromatograms of (A) well water and (B) sea water spiked with benzene derivatives (1 mg/L). Well (or sea) water sample (—) and (····) spiked sample after extraction and preconcentration by SBSE. (—) Standard solution, 1 mg/L.



**Fig. 3S.** Typical chromatograms of furanic derivatives. (A) Standard solution (1 mg/L) and analytes after stir bar sorptive extraction from (B) aqueous solutions and (C) isoctane. (—) 278 nm, (—) 248 nm.



**Fig. 4S.** Typical chromatograms of antibiotics. (A) Standard solution (1 mg/L) and (B) analytes after stir bar sorptive extraction from isoctane.

