

Policy Proposal for Metals Speciation in Tailings Contaminated Soils: A Case Study in Chihuahua, Mexico

Irma Cruz Gavilán García,^{1*} Georgina Fernández Villagómez,² Alejandro Menchaca Pérez,¹ Luis Adrian Barraza Torres² and Arturo Gavilán García³

¹ Environmental Management Unit, Faculty of Chemistry, National Autonomous University of Mexico, Av. Universidad 3000, C.P. 04510, Del. Coyoacán, Ciudad de México, México.

² Faculty of Engineering, National Autonomous University of Mexico, Av. Universidad 3000, C.P. 04510, Del. Coyoacán, Ciudad de México, México.

³ National Institute of Ecology and Climate Change, Ministry of Environment and Natural Resources, Periférico 5000, Col. Insurgentes-Cuicuilco, C.P. 04530, Ciudad de México, México.

* Corresponding author: irmac@unam.mx

Received August 31st, 2016; Accepted December 2nd, 2016.

Abstract. This work is focused in studying the inclusion of chemical speciation in the characterization of mining tailings in Mexican regulation with a case study in Parral, Chihuahua, Mexico. In this site, high concentration of lead and arsenic in tailings located in the surroundings represent a high concern to the local population. The total concentration of Pb in the samples ranged from 78.03 ± 2.67 to 5748 ± 263.63 [mg kg⁻¹] and from 5.49 ± 0.43 to 509.84 ± 40.18 [mg kg⁻¹] for As. Chemical speciation was tested for samples that exceeded the limits of the Mexican Regulation using sequential extractions proposed by the Bureau Community of Reference (BCR) to obtain the distribution of lead and arsenic in four different fractions. The set of extractions consisted in the extractable/exchangeable fraction (F1), the reducible fraction (F2), the metals bound to organic matter and sulfides (F3) those under oxidizing conditions, and the residual fraction (RF). The results show that 70% of lead is found in F1 and F2 fractions while 20% is found in F3 fraction. In case of arsenic, 60% is found in residual fraction, 25% in fraction F3 and less than 15% in fractions F1 and F2.

Keywords: Arsenic; lead; atomic absorption spectrometry; speciation; mining waste.

Resumen. Este trabajo se enfoca en el estudio de la inclusión de la especiación química en la caracterización de los residuos mineros en la regulación mexicana con un estudio de caso en Parral, Chihuahua, México. En este sitio, alta concentración de plomo y arsénico en los jales ubicados en los alrededores representan una gran preocupación para la población local. La concentración total de Pb en las muestras osciló entre $78,03 \pm 2,67$ a $5748 \pm 263,63$ [mg kg⁻¹] y de $5,49 \pm 0,43$ a $509,84 \pm 40,18$ [mg kg⁻¹] para As. Se aplicó la especiación química en las muestras que excedieron los límites de la regulación mexicana mediante extracciones secuenciales propuestos por la Oficina Bureau de Referencia (BCR) para obtener la distribución de plomo y arsénico en cuatro fracciones diferentes. El conjunto de extracciones consistió en la fracción extraíble/intercambiable (F1), la fracción reducible (F2), los metales unidos a materia orgánica y sulfuros (F3) aquellos en condiciones oxidantes, y la fracción residual (RF). Los resultados muestran que 70% de plomo se encuentra en las fracciones F1 y F2, mientras que 20% se encuentra en la fracción F3. Para el caso de arsénico, 60% se encuentra en la fracción residual, 25% en la fracción F3 y menos del 15% se distribuye en las fracciones F1 y F2.

Palabras clave: Arsénico; plomo; espectrometría de absorción atómica, especiación, residuos mineros.

1. Introduction

Mining is one of the economic activities that have greatly contributed to the economic development of Mexico. The mining industry is mostly related to metal extraction and is mainly engaged in the production of copper, zinc, silver and lead. In Mexico, there have been various regions with huge mining industry such as Southern Part of the State of Chihuahua where mining activities date from 1567 [1].

In the city of Parral, in the State of Chihuahua, mining brought not only prosperity, economic growth and urban development, but also an environmental latent problem since the beginning of the operation of La Prieta mine. With an estimated production of 1,500 ton a day of pure mineral, soil wastes

have been generated to date covering an area of 80 hectares approximately [2].

The town of Hidalgo del Parral is located in the south of the State of Chihuahua, between parallels 26° 51' and 27° 23' North Latitude; the meridian 105° 23' and 105° 59' West Longitude, and an altitude between 1,300-2,400 m. Its limits are to the north with the Municipalities of Valle de Zaragoza and Allende, to the east with the municipality of Allende, to the south with the municipalities of Allende, Matamoros, Santa Barbara and San Francisco del Oro and to the west with the municipalities of San Francisco del Oro, Huejotitán and Valle de Zaragoza. It covers 0.8% of the state's area; it covers an area of 1,751 km², which represents 0.71% of the state area.

Its climate is classified as semi-humid and warm, with a maximum temperature of 36 °C and a minimum of 12 °C. The annual average precipitation is 489 mm with an average of 72 rainy days and a relative humidity of 48%. The prevailing winds come from the southwest [3].

The deficiency of the mineral extraction processes used in the mid-seventeenth century [4] caused the change of methodology to selective flotation resulting in the generation of large volumes of tailings, which is estimated to have been accumulated to date up to 19,527,678 m³ [5].

Previous studies in the area of Parral show the presence of lead and arsenic in soil (Fig. 1), exceeding the limits set by national and international organizations, which suggests that the tailings from the La Prieta mine is one of the major emission sources the metals [6, 7]. Other studies have found heavy metal contamination in water bodies in the region from mining contamination [8, 9].

In order to determine the bioavailability of the Pb and As in tailing contaminated soil, it is important to determine the chemical species of them in order to establish its mobility.

The BCR method (Community Bureau of Reference) [10] is useful to determine the bioavailability of a metal at risk of being toxic to the environment based on sequential extractions, from which each sample represents the distribution of the metal and consist in: interchangeable/soluble fraction (F1), reducible fraction (F2), oxidizable fraction (F3) and residual fraction (FR).

The aim of this study is to determine the Pb and As chemical species in soil samples in order to provide elements for policy making based on the concentration levels in Parral, Chihuahua respect to the official national standard [11].

2. Materials and methods

2.1. Soil sampling and preparation

Sampling points were selected according to the Mexican Technical Standard Guideline [12], which establishes the specifications for the collection and handling of samples, to allow the characterization of tailings contaminated soils in the study site, through the identification and quantification of metals and metalloids, the exploratory surface sampling was designed considering a confidence interval of 95 % for a total of 19 georeferenced samples (Fig. 2). Sampling considered field measurements of parameters such as electrical conductivity, pH, temperature at 30 cm depth, relative humidity and wind speed. Transportation of tailings contaminated soil samples to the laboratory was done in low-density polyethylene bags.

Lead and arsenic total content was determined by digestion with aqua regia. One gram of sample was weighted into the reaction vessel, and then 7.5 mL of 12.0 mol L⁻¹ HCl followed by 2.5 mL of 15.8 mol L⁻¹ HNO₃, drop by drop, to reduce foaming, was added. The temperature of the reaction mixture was slowly raised until 85°C until reflux conditions were reached and maintained for 1 h. After cooling the reaction vessel to room temperature the digests were filtered through Whatman No. 541 filter paper into 50 mL volumetric flasks, the insoluble residue onto the filter paper was washed with a 0.5 mol L⁻¹ HNO₃ and the volumetric flask was filled with 0.5 mol L⁻¹ HNO₃.

2.2. Granulometric study of samples from the site under study

A fraction of the samples, about 200 g each, were sieved for a granulometric study (Beckman Coulter LS Particle Size

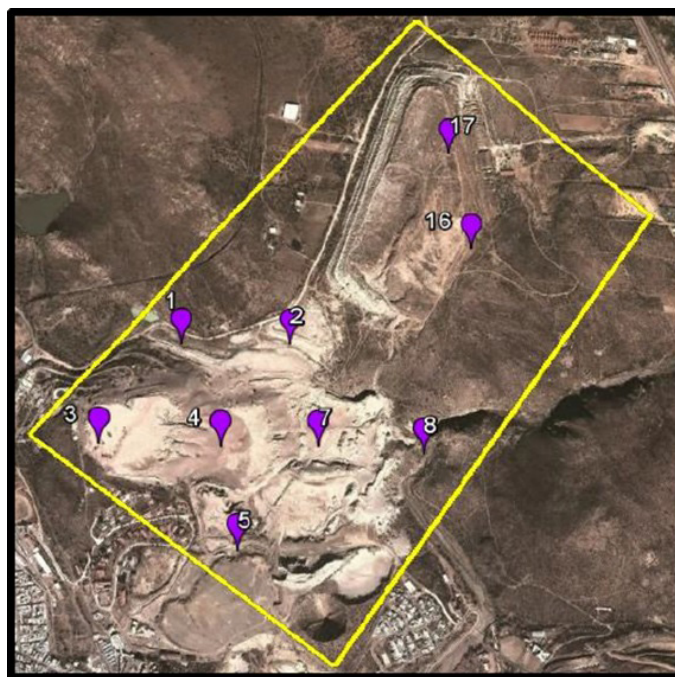


Figure 1. Geographic location of tailing contaminated soil in Hidalgo del Parral, Chihuahua [4].

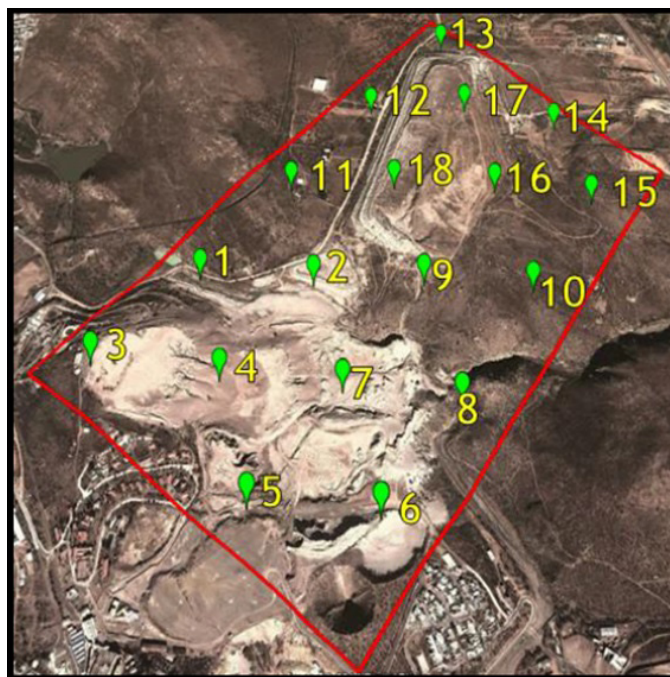


Figure 2. Space distribution of sampling points in the study area.

Analyzer). This study provides a value of the particle size which are essential because it influences in the rate of oxidation of the mineral, such that it is favored when this is finely divided, that is, the greater the surface exposed to the reaction medium if recording has fine particles that exist, it is more likely that minerals or potentially toxic elements can be released more easily to the environment, however if the particles are of larger diameter, this probability decreases slightly [13]. Some samples were selected to determine the grain diameter of mining waste present in the study area. This selection was based in points that had a higher concentration of lead and arsenic, as well as a low value (Fig. 3).

2.3. Apparatus

A Thermo Scientific (Super-Nuova Multi-Place) heating plate equipped with a thermocouple thermometer was used for aqua regia open digestion method (USEPA 3050B). Lead and arsenic were determined in digests and extracts using a Perkin Elmer 3100A spectrometer and a Perkin Elmer Analyst 100 spectrometer equipped with a MHS-10 hydride system.

2.4. Standards and Reagents

All the solutions were prepared with de-ionized water 18 MΩ·cm, Millipore Milli-Q system. Arsenic and lead stock

solution contains 1000 µg/mL (High-Purity Standards). These stock solutions were kept at 4 °C in darkness. More dilute solutions for the analysis were prepared daily for each analysis.

Nitric acid (HNO₃, Baker, Instra-analysed, 70%) and hydrochloric acid (HCl, Baker, Instra-analysed, 36.5–38%) were used for the aqua regia digestion.

2.5. Storage and preparation of soils samples for total concentration analysis

Sample preparation involves the following steps: (1) drying, (2) homogenizing and sieving, and (3) storage. The samples were digested with a mixture of aqua regia (nitric acid: hydrochloric acid in 1:3) [14].

2.6. Analytical methods

Lead and Arsenic concentrations in digests and extracts were determined using Flame Atomic Absorption Spectroscopy and Hydride Generation-Atomic Absorption Spectroscopy respectively [15, 16]. For the measurement of Pb and As, hollow cathode lamps operated at 10 mA and a 283 nm wavelength, and 19 mA and a 193.7 nm wavelength were used respectively; the spectral band was 0.7 nm for Pb and 2.0 nm for As. Concentration of metals was obtained by the standard calibration technique.

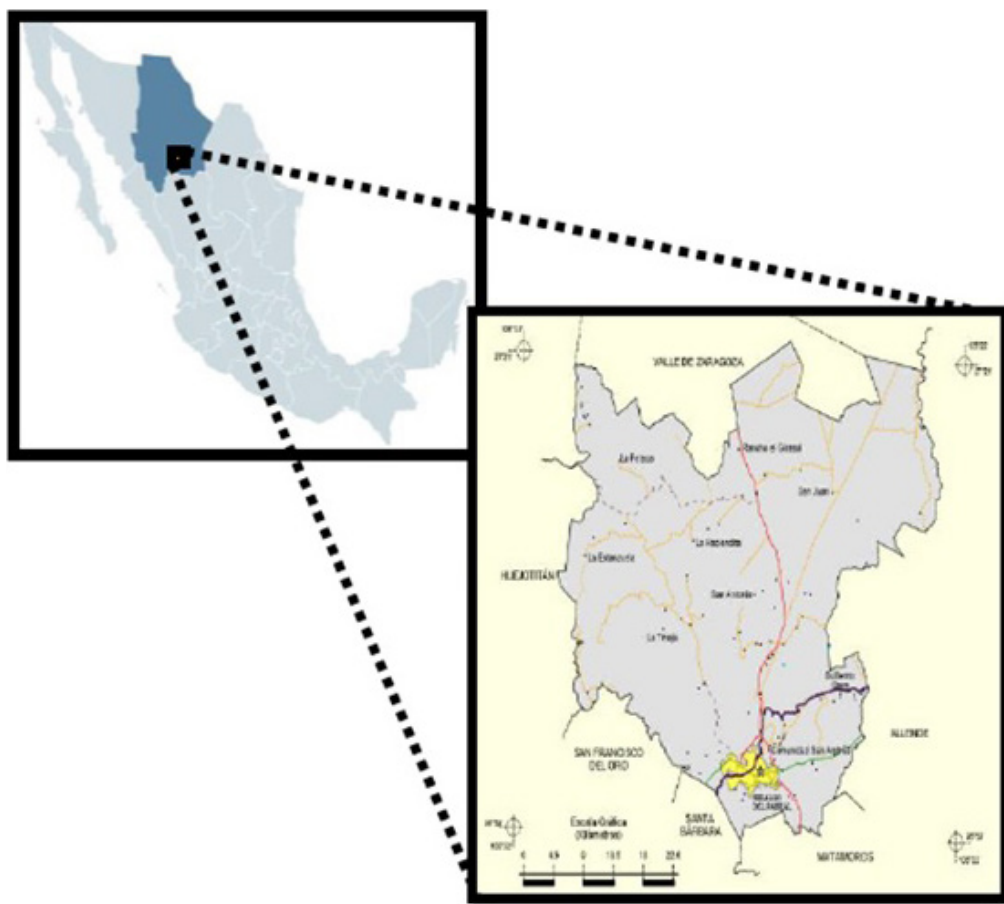


Figure 3. Sampling points for the granulometric study.

To calculate the limit of detection (LOD) and the limit of quantification (LOQ), three curves were prepared, obtaining the standard deviation of the intercept (Sb) and average of the slope. To evaluate the linear range, a calibration curve was prepared in the concentration range of 5 to 50 ng/L for arsenic and 5 to 30 mg/L for lead. Calibration sensitivity was determined by using the slope of the calibration curve. The accuracy of the method was evaluated as percentage of recovery by adding known amounts of arsenic and lead standard before the process of digestion and extraction to a blank sample. All samples were analyzed in triplicate. The results are expressed as mean values with standard deviations (SD) as a measure of dispersion (average \pm SD).

2.7. Sequential Extraction Procedure

The sequential extraction was carried out according to the BCR (Community Bureau of Reference of the European Community) three-step procedure [10]. The method determines four well defined geochemical fractions of metals in soils and sediments: acid-soluble/exchangeable fraction (F1), reducible fraction (F2), oxidizable fraction (F3), and residual fraction (RF) [17]. Extractions were performed using the reagents given in section 2.4.

Extracting reagents were: acetic acid ($\text{CH}_3\text{CO}_2\text{H}$ Sigma-Aldrich 99.7%), hydroxylamine hydrochloride ($\text{NH}_2\text{-OH}$ HCl J. T. Baker), hydrogen peroxide (H_2O_2 J.T. Baker 30%) and ammonium acetate ($\text{CH}_3\text{CO}_2\text{NH}_4$ J.T. Baker). Hydride-generating reagents were: sodium borohydride (NaBH_4 tablets, Fluka, purity >97% at 3% in 1% NaOH); HCl 15% were used for pre-reduction in the determination of arsenic after aqua regia leaching.

Step 1 (acid extractable/exchange fraction-bound to carbonates):

A total of 40 mL of acetic acid 0.11 mol L^{-1} was added to 0.5 g air-dried sample and shaken for 16 h. The mixture was centrifuged to separate the extract from the residue using a centrifuge (Labnet Hermlle) at 3000 rpm for 15 min and the supernatant solution filtered through Whatman No. 40 filter paper, rinsed with deionized water, hand shaken and stored in acid rinsed polypropylene tubes for further analysis. The residue was washed with 20 mL of distilled water by shaking for 20 min, centrifuged and the washings discarded.

Step 2 (reducible fraction-bound to Fe/Mn oxides):

A total of 40 mL of hydroxylammonium chloride 0.5 mol L^{-1} , adjusted with nitric acid to pH 2, was added to the residue from step 1 and the extraction performed as above.

Step 3 (oxidizable fraction-bound to organic matters and sulfides):

The residue from step 2 was treated twice with 8.8 mol L^{-1} hydrogen peroxide, first digestion at room temperature (approx. $23 \pm 2 \text{ }^\circ\text{C}$) for 1 h and a second digestion for additional 1 h at $85 \pm 2 \text{ }^\circ\text{C}$ in a water bath, then 50 mL of ammonium acetate 1 mol L^{-1} , was added and the extraction performed as step 1, the solid residue was retained for aqua regia digestion.

Step 4 (residual fraction):

Residual material remaining after step 3 of the sequential extraction was digested in the same manner after quantitative transferring of the residual from PTFE vessel to the glass flask. The residue from the last step was digested with a mixture of 20 mL aqua regia as described above.

Using the computer program SURFER, the data were introduced to develop a map of iso-concentration for observe in general the situation of the sampling points with higher concentration of arsenic and lead in the study area.

3. Results and discussion

During the fieldwork, statistical data of environmental parameters were listed in Table 1, the observed.

3.1. Granulometric study

The results of the sieve study for the selected samples is summarized in Table 2, as seen the averages ranging between 154 microns and 379 microns, with an overall median of 266.94 microns and a standard deviation of 81.32 microns.

3.2. Total concentration of arsenic and lead in soil samples

For the determination of the total lead and arsenic concentrations in the digested samples the calibration curve was in the

Table 1. Statistical data of environmental parameters during the fieldwork

	Relative humidity (%)	Wind speed (mph)	Electric Conductivity (S/cm)	pH	Environmental temperature ($^\circ\text{C}$)	Surface temperature ($^\circ\text{C}$)	Temperature at 30 cm depth ($^\circ\text{C}$)
Minimum	28.8	0.0	0.12	6.2	14.4	15	20.0
Maximum	66.2	9.4	0.81	7.9	38.1	54	34.0
Median	48.9	4.8	0.26	7.4	25.6	28.5	26.5
SD	11.4	2.6	0.16	0.6	5.4	13.1	4.1

SD = Standard Deviation

Table 2. Media and mode of the samples analyzed

Sample	Median (μm)	Mode (% del volume <)						
		2 (μm)	4 (μm)	63 (μm)	125 (μm)	250 (μm)	500 (μm)	1000 (μm)
HP1	365.0	2.0	7.6	33.6	39.4	47.5	67.4	92.7
HP2	161.4	1.4	2.3	16.3	43.4	82.8	99.1	100.0
HP3	314.4	1.3	2.2	10.5	22.2	49.2	83.1	97.3
HP4	251.7	2.2	4.0	19.8	38.7	66.6	89.4	96.1
HP5	307.5	1.1	1.8	12.8	28.7	52.9	82.6	96.8
HP7	252.6	1.3	2.2	18.9	42.9	68.2	88.1	96.2
HP8	216.9	4.1	7.2	25.0	40.9	66.5	90.6	99.3
HP16	379.0	4.0	6.1	18.4	31.7	50.0	72.9	92.2
HP17	154.0	3.2	5.7	30.1	54.7	81.3	95.7	100.0

range aforementioned ($r = 0.997$, $n = 6$ for arsenic and $r = 0.998$, $n = 6$ for lead). The LOD was 0.01 mg kg^{-1} and 0.13 mg kg^{-1} and the LOQ was 0.03 mg kg^{-1} and 1.13 mg kg^{-1} respectively. The percentage of recovery showed no significant differences between the measured values for the total arsenic and lead content in the blank sample.

Total concentration of arsenic and lead (mg/kg dry material) from the total digestion analysis is presented in Table 3.

In the case of arsenic concentrations ranged from 7.42 ± 0.65 to $509.84 \pm 40.18 \text{ mg kg}^{-1}$, 8 soil samples presented total

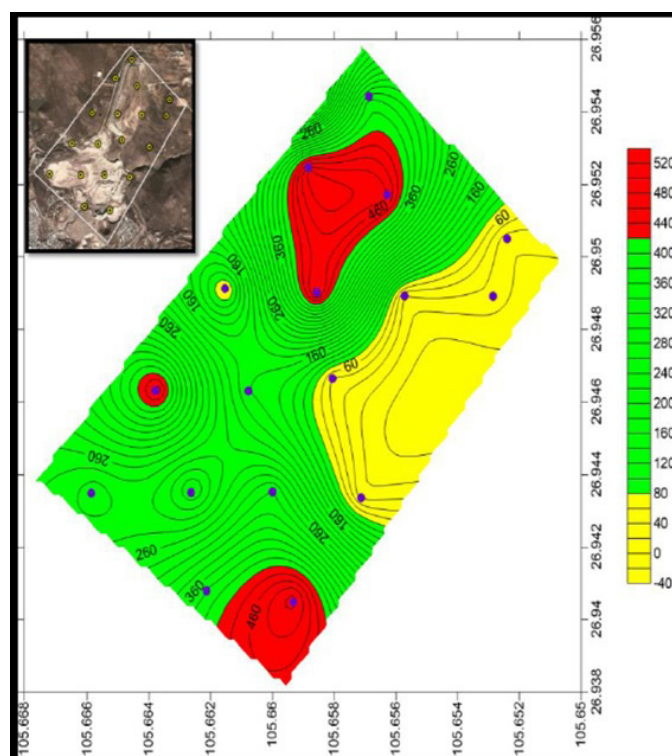
As concentrations higher than 260 mg kg^{-1} , which has been used by Mexican guidelines as trigger level for industrial soil remediation [11]. In detail, 47% of soil samples presented arsenic concentrations between $299\text{--}510 \text{ mg kg}^{-1}$ (HP1, HP5- HP7, HP12, HP13, HP17, HP18) and the other 53% of samples are below 207 mg kg^{-1} (HP2-HP4, HP8-HP11, HP14-16). The reported arsenic is originated by the mining activities, this is reflected because the concentration of the background soil which contains $10.44 \pm 0.83 \text{ mg kg}^{-1}$ of arsenic. Figure 4 shows that the concentrations of As correspond to the samples taken in the northern part and the south part of the study area, this areas correspond to the mining tailings that are near to the residential zone.

Table 3. Total concentration of As and Pb (mg/kg dry weight) in soil samples from Hidalgo del Parral, Chihuahua

Sample ($n = 3$)	As	Pb
HP1	476.00 ± 38.01	5206.77 ± 184.27
HP2	159.35 ± 11.15	4288.40 ± 113.89
HP3	206.56 ± 14.46	5089.64 ± 186.16
HP4	154.89 ± 10.84	3906.6 ± 228.91
HP5	377.15 ± 30.17	4429.93 ± 109.39
HP6	509.84 ± 40.18	4682.32 ± 440.81
HP7	299.70 ± 23.98	5040.03 ± 340.16
HP8	7.42 ± 0.65	711.94 ± 11.54
HP9	36.76 ± 2.94	3852.79 ± 213.66
HP10	NA ^a	NA ^a
HP11	47.11 ± 3.77	263.58 ± 19.99
HP12	506.89 ± 35.48	2725.89 ± 153.90
HP13	389.38 ± 27.26	3501.32 ± 223.57
HP14	5.49 ± 0.43	$109.91 \text{ } 9.16$
HP15	14.93 ± 1.19	307.78 ± 27.56
HP16	15.87 ± 1.26	1194.13 ± 59.70
HP17	485.64 ± 33.99	4774.30 ± 94.75
HP18	490.10 ± 34.3	5748.24 ± 263.63
HPB ^b	10.44 ± 0.83	78.03 ± 2.67

^a The sampling point was removed due to difficult access to the study site.

^b Background soil.

**Figure 4.** Overview of total arsenic concentrations of sampling points in the study area in mg/kg (SURFER).

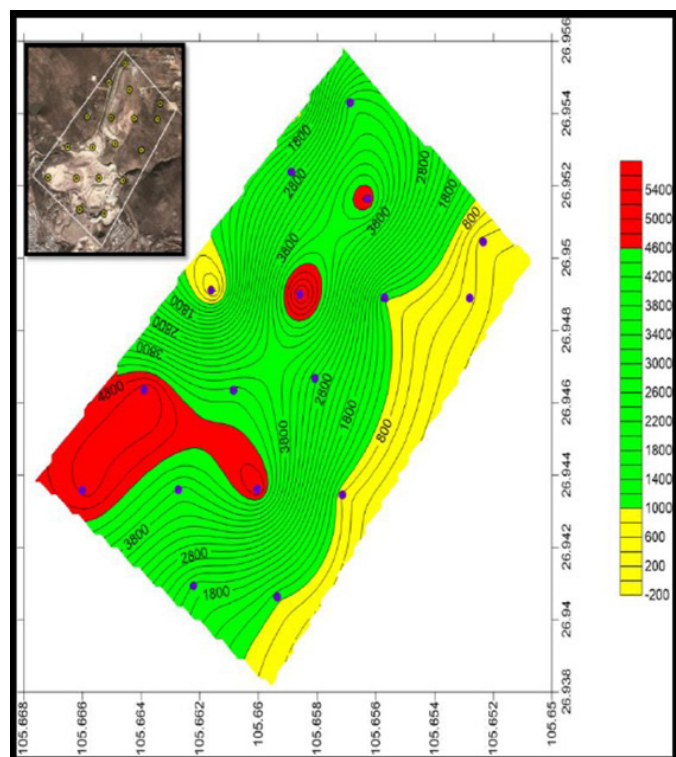


Figure 5. Overview of total lead concentrations of sampling points in the study area in mg/kg (SURFER).

In the case of lead concentrations ranged from 78.03 ± 2.67 to $5748.24 \pm 263.63 \text{ mg kg}^{-1}$, 13 soil samples presented total Pb concentrations higher than 800 mg kg^{-1} , which has been used by Mexican guidelines as trigger level for industrial soil remediation [11]. In detail, 68% of soil samples presented lead concentrations between $1194\text{--}5748 \text{ mg kg}^{-1}$ (HP1, HP2, HP3, HP4, HP5, HP6, HP7, HP9, HP12, HP13, HP16, HP17, HP18) and the other 32% of samples are below 711 mg kg^{-1} (HP8, HP10, HP11, HP14, HP15). The reported lead is originated by the mining activities, this is reflected because the concentration of the background soil which contains $78.03 \pm 2.67 \text{ mg kg}^{-1}$ of lead. Figure 5 shows that the concentrations of Pb correspond

to the samples taken in all the study area, which is near to the residential zone.

It should be noted that the prevailing winds direction (from SO to NE) [18] in the area also pose a risk to the population, growing areas near the mine.

3.3. Geochemical fraction of As and Pb

Heavy metal mobility and bioavailability in soils depend strongly on the mineralogical and chemical forms in which they occur. The results (Table 4) of this investigation have shown that for arsenic were highly associated with the oxidizable (F3) and residual fraction (FR), for arsenic. Almost 90% of the samples have most of the arsenic in the residual fraction (RF), these fraction is characterized by low mobility and low probabilities of posing adverse effects to the environment. It's observed that the content of arsenic in fraction 2 (F2) have less than 50 mg kg^{-1} of arsenic, although these values are minimal in a matter of accessibility, the content of arsenic in this zones is higher than the values established at international (0.39 mg/kg for US residential areas, 12 mg/kg for Canada, 32 mg/kg for United Kingdom) and national guidelines (22 mg/kg for residential/agricultural soil) [11, 19, 20]. That exposure to arsenic poses a carcinogenic hazard to the lung via both the oral and inhalation routes of exposure. The sites require more attention due to the possible risk to potentially exposed residents. As it can be observed in the Table 4, the samples have shown insignificant amounts associated with the extractable/exchangeable fraction (F1).

For lead (Table 5), distribution varies depending on the sample; it has no standard behavior as the case of arsenic. In detail 8 samples (HP1, HP2, HP5, HP6, HP9, HP13, HP17, HP18) contain more than 70% of lead in fraction 1 (F1) and fraction 2 (F2). The F1 involves weakly adsorbed metals retained on the solid surface by relatively weak electrostatic interaction; metals that can be released by ion-exchangeable processes. Metals on this fraction also can be replaced by neutral salts. The second fraction, bound to iron and manganese oxyhydroxides that are present in the soils can change their adsorption capacities drastically according to the redox conditions (presence/absence of O_2), producing either FeS or $\text{FeO}(\text{OH})$

Table 4. Distribution of element fractionation for arsenic (mg/kg weight dry) in the study area of Hidalgo del Parral

Sample (n=2)	Step 1 (F1)	Step 2 (F2)	Step 3 (F3)	Residual (RF)	Total SEP	Total Digestion	Recovery (%) ^a
HP1	11.63±0.58	33.83±1.69	100.45±5.02	154.70±7.73	300	476	63
HP5	2.16±0.11	37.45±1.87	24.94±1.25	126.04±6.30	190	377	51
HP6	6.26±0.31	32.54±1.63	26.22±1.31	241.11±12.06	306	509	60
HP7	4.16±0.21	32.59±1.63	114.17±5.71	77.92±3.90	228	299	76
HP12	3.99±0.20	36.96±1.85	84.98±4.25	177.28±8.86	303	506	60
HP13	3.96±0.21	37.47±1.87	96.47±4.82	149.85±7.49	287	389	74
HP17	1.84±0.09	34.51±1.73	36.14±1.81	231.16±11.56	303	485	63
HP18	3.15±0.10	48.99±2.45	78.13±3.91	212.76±10.62	343	490	70

^a = $[(F1+F2+F3+TR) / (\text{Total digestion})] \times 100$

Table 5. Distribution of element fractionation for lead (mg/kg weight dry) in the study area of Hidalgo del Parral

Sample (n=2)	Step 1 (F1)	Step 2 (F2)	Step 3 (F3)	Residual (RF)	Total SEP	Total Digestion	Recovery (%) ^a
HP1	1,840±92	2,219±110	647±32	230±11	4,937	5,206	95
HP2	2,295±114	1,338±67	305±15	274±14	4,213	4,288	98
HP3	529±26	688±34	2,507±125	1,015±50	4,741	5,089	93
HP4	492±24	1,257±63	1,589±79	567±28	3,905	3,906	99
HP5	1,122±56	2,210±110	332±17	791±40	4,456	4,424	101
HP6	1,084±54	2,534±127	593±30	661±33	4,873	4,682	104
HP7	1,064±53	1,854±93	647±32	1,061±53	4,627	5,040	92
HP9	1,425±71	1,354±68	270±13	225±11	3,275	3,852	85
HP12	1,130±56	820±41	723±36	109±5	2,783	2,725	102
HP13	1,547±77	1,127±56	280±14	267±13	3,223	3,501	92
HP16	3.29±0.16	203±01	1,039±52	85±4	1,331	1,194	112
HP17	1,745±82	2,078±103	546±27	914±46	5,284	4,774	110
HP18	2,538±127	2,413±121	566±28	613±31	6,131	5,748	107

$$^a = [(F1+F2+F3+TR) / (\text{Total digestion})] \times 100$$

liberating co-precipitated or adsorbed metals at every change [21]. For the rest of the samples, lead is distributed in the second and third fraction (F2 and F3). Given the absence of organic matter in the case of F3, the extracts obtained during this step are metals bound to sulphides, being unstable only under severe oxidizing conditions [22], making it one of the most stable fractions. As it is observed, lead concentrations in the F1 are above the values established at international (840 mg/kg for US residential areas, 750 mg/kg for European Union) and national guidelines (400 mg/kg for residential/agricultural soil) [11, 22].

For both elements the sum of concentrations for each fraction was compared with the total concentration from the values in Table 3. Reasonable percentages of recovery of all samples for arsenic were from 51 to 76 %. It is considered that solubility and equilibration limitations in extraction procedure are probably responsible for the lower extractability of arsenic [23]. In the case of lead [24] good recovery percentages are observed ranged from 85-112%. Less stable forms of arsenic and lead compounds ranged between 1.84-48.99 and 3.29-2,538 mg kg⁻¹ respectively, which indicated a potential risk.

3.4. Risk estimation from exposure to bioaccessible fractions

Regarding the doses of reference published in the Integrated Risk Information System [25] of the United States for As (3 x 10⁻⁴ mg/kg-d for oral exposure), and considering an ingestion of 32 mg soil/d [26], through a hand to mouth mechanism and considering a mean weight in Mexican male population of 77.7 kg [27], there is low potential risk to the population of Parral since the exposure is from 15 to 396 times smaller than the dose of reference. However, there is risk cancer through inhalation. Risk calculation could not be done for Pb since there is no dose

of reference available. On the other hand, a mixed effect of As and Pb exposure might be assessed.

3.5. Policy Making Proposal

According to the Mexican Ministry of Environment [28], there are more than 635 potentially contaminated sites in Mexico. From those, just a little fraction has been remediated because of limited funding and limited capacity for characterizing and lack of a methodology to prioritize them. Even though there is a standard for contaminated soil since 2007 [11], there was not considered a clear assessment for stability of chemical species in soil matrixes. This situation is similar in other Latin American Countries and other regions where the lack of regulation has turned into large impacts of mining activities.

Chemical speciation methods can provide a set of criteria that might be used by local authorities to prioritize contaminated sites and focus efforts in those with higher risk to health or the environment. Fractions F1 and F2 are the ones that might be of concern while combined with high exposition through ingestion or respiration.

4. Conclusions and recommendations

An exploratory and systematic surface sampling was done in order to establish the presence of arsenic and lead in the mining area of Hidalgo del Parral, Chihuahua.

The arsenic and lead quantification method was validated using Atomic Absorption Flame & Hydride-Generation Spectrometry with appropriate performance and finding concentration ranges of 7.42 ± 0.65 to 509.84 ± 40.18 [mg kg⁻¹] for arsenic & 83.34 ± 2.67 to 5579 ± [mg kg⁻¹] for lead.

From a total of 18 samples taken at the site, eight samples (47%) had higher concentration of arsenic than the limit established in NOM-147-SEMARNAT/SSA1-2004, which corresponds to 260 mg kg⁻¹; on the other hand, 13 samples (76%) had higher concentration of lead than the limit of 800 mg kg⁻¹ established in the same regulation. The samples out of range for both metals were taken to a speciation test consisting in sequential extractions using the method BCR (Community Bureau of Reference) to determine their bioavailability.

In case of arsenic, the speciation shows that the higher fraction is in the oxidized fraction (F3) and in the residual fraction (FR), which suggest that the mobility & bioavailability of this element is very low as well as the migration to other compartments; therefore, environmental & health effects are not evident. However, even though the arsenic concentration in the reducible fraction (F2) is lower than 50 mg kg⁻¹, the proximity to populated areas increases the chronic exposition risk from ingestion/respiration of dusts in these sites.

In case of lead, eight samples had the higher concentration in the fraction F1 and fraction F2, suggesting that the little stability of the metal is high since the chemical species have weak adherence to the soil matrix and can be released by ionic exchange processes; these samples had concentration values higher than the limit of the soil standard and represent a risk to health and the environment.

For both elements, recovery percentage of the speciation method was evaluated comparing the results with the total concentration of the samples, showing values of 85% to 112%.

Regarding the risk quantification for arsenic exposure, dose of reference was not reached by two orders of magnitude. However, there is risk of a mixed effect of Pb and As chronic exposure.

A bioaccessibility study for both metals as well as a fine particle (PM_{2.5}) in air are recommended in order to assess urban contamination and the risk to health by accidental ingestion of metal-polluted soils.

As Policy Making action, risk assessment should be included in environmental regulation using the estimation of chemical speciation of species of concern (those that are more easy to move in the environment and that can be absorbed by the organism).

5. Acknowledgements

We wish to thank Dra. Pura Alonso Abella, from Escuela Politécnica Superior de Ingeniería de Manresa, España. We also thank to the authorities of Mina La Prieta of Parral Chihuahua for allowing the access to the studied sites, as well as to Dr. Rene Rosiles Martínez from Facultad de Medicina Veterinaria y Zootecnia, UNAM.

6. References

1. INE. http://www2.ine.gob.mx/publicaciones/libros/16/parte3_12.html, 2007, Accessed in June, 2016.
2. West, R. C. *La Comunidad Minera en el Norte de la Nueva España: El Distrito Minero de Parral. Introducción y Notas: Zacarías Márquez, Z. T.; Traductor: Cabrera, F. R. Chihuahua, Gobierno del Estado.* Secretaría de Educación y Cultura. Biblioteca Chihuahuense, 2002, 195.
3. Rodríguez, V.L.; Ferman, Á.H.; Torres, C.E.; Sáenz, M.L.; Luna, C.J.; Herrera, E.; González, G.; Aranda, C.D.; Carrillo, J.; Lozoya, L. *J. Environ. Sci. Eng.* 2010, 4, 12-17.
4. INEGI. *Municipal Geographic Information of the United States of Mexico, Hidalgo del Parral, Chihuahua, Geostatistics.* 2009 key 08032.
5. LAFQA. *Diagnóstico ambiental de las presas inactivas de jales y zonas de influencia, Santa Bárbara, Chihuahua: México D.F., Reporte elaborado para Minerales Metálicos del Norte S.A.* 2005, 180.
6. Reyes, A.; Ramos, S.; Avelar, F.; Godínez, L.; Rodríguez, F. *Conciencia Tecnológica.* 2008, 35, 32-35.
7. Aditi, R.; Katarzyna, K.; López, P.; Rosado, L. J.; Cebrian, E.M.; García, V. G.; Ronquillo, D.; Stoltzfus, J. *J. Environ. Res.* 2011, 111, 670-676.
8. Rodríguez, L. M.; Torres E.; Sáenz, L.; Avitia, M.; Rodríguez, G.; Herrera, E.; Navarro, C. J.; González, G.; Lozoya, L.; Acosta, D. *Journal of Environmental Science and Engineering.* 2012, A1, 286-294.
9. Quintana, M.E.C.; Sosa, C.M.; Rubio, A.H.; Puga, T.S.; Quintana, M.G.; Moreno, M.; Alcalá, J.J. *Revista Latinoamericana de Recursos Naturales.* 2008, 4, 68-76.
10. Rauret, G.; López-Sánchez, J. F.; Sahuquillo, A.; Rubio, R.; Davidson, C.; Quevauviller, P. *J. Environ. Monit.* 1999, 1, 57-61.
11. SEMARNAT. NOM-147-SEMARNAT/SSA1-2004, Diario Oficial de la Federación. 2007.
12. Secretaría de Economía, NMX-AA-132-SCFI-2006, Diario Oficial de la Federación. 2006.
13. García, C. Estudio del mecanismo de generación de drenajes ácidos en una presa de estériles piriticos. Tesis de Doctorado, Universidad Complutense de Madrid, Facultad de Ciencias Químicas, Departamento de Ciencia de los Materiales e Ingeniería Metalúrgica, ISBN: 84-669-2400-0, 1998, 114-116.
14. USEPA. <https://www.epa.gov/sites/production/files/2015-06/documents/epa-3050b.pdf>. 1996. Accessed in June, 2015.
15. USEPA. <https://www.epa.gov/sites/production/files/2015-12/documents/7062.pdf>. 1994. Accessed in June, 2015.
16. USEPA. <https://www.epa.gov/sites/production/files/2015-12/documents/7000b.pdf>. 1996. Accessed in June, 2015.
17. Fathollahzadeh, H.; Kaczala, F.; Bhatnagar, A.; Hogland, W. *Environ Sci. Pollut. Res.* 2014, 21, 2455-2464.
18. INAFED. <http://www.inafed.gob.mx/work/enciclopedia/EMM08chihuahua/municipios/08032a.html>. 1999. Accessed in June, 2016.
19. Teaf, C. M.; Covert, D. J.; Teaf, P. A.; Page, E.; Starks, M. J. <http://scholarworks.umass.edu/soilsproceedings/vol15/iss1/10>. 2010. Accessed in June, 2015.
20. UKEPA. https://www.gov.uk/government/uploads/system/uploads/attachment_data/file/313869/scho0409bpyy-e-e.pdf. 2009. Accessed in June, 2016.
21. Cornelis, R.; Crews, H.; Caruso, J.; Heumann, K. *Handbook of Elemental Speciation: Techniques and Methodology*, John Wiley & Sons, Ltd. 2003. ISBN: 0-471-49214-0.
22. González, F.; Tornero, C. M.; Ángeles, C.; Bonilla, N. *Rev. Int. Contam. Ambient.* 2009, 25, 15-22.
23. Shiowatana, J.; McLaren, R. G.; Chanmekha, N. *J. Environ. Qual.* 2001, 30, 1940-1949.

24. Hlavay, J.; Prohaska, T.; Weisz, M.; Wenzel, W. W.; & Stingeder, G. J. *Pure and Applied chemistry* **2004**, 76, 415-442.
25. IRIS. <https://www.epa.gov/iris>. **2015**. Accessed in June, 2016.
26. Irvine, G.; Doyle, J. R.; White, P. A.; Blais, J. M. *Science of the Total Environment*, **2014**, 470, 138-146.
27. Osuna-Ramírez, I.; Hernández-Prado, B.; Campuzano, J. C.; Salmerón, J. *Salud pública de México*, **2006**, 48, 94-103.
28. SEMARNAT. [Http://apps1.semarnat.gob.mx/dgeia/informe_2008/07_residuos/cap7_6.html](http://apps1.semarnat.gob.mx/dgeia/informe_2008/07_residuos/cap7_6.html). **2016**. Accessed in June, 2016.